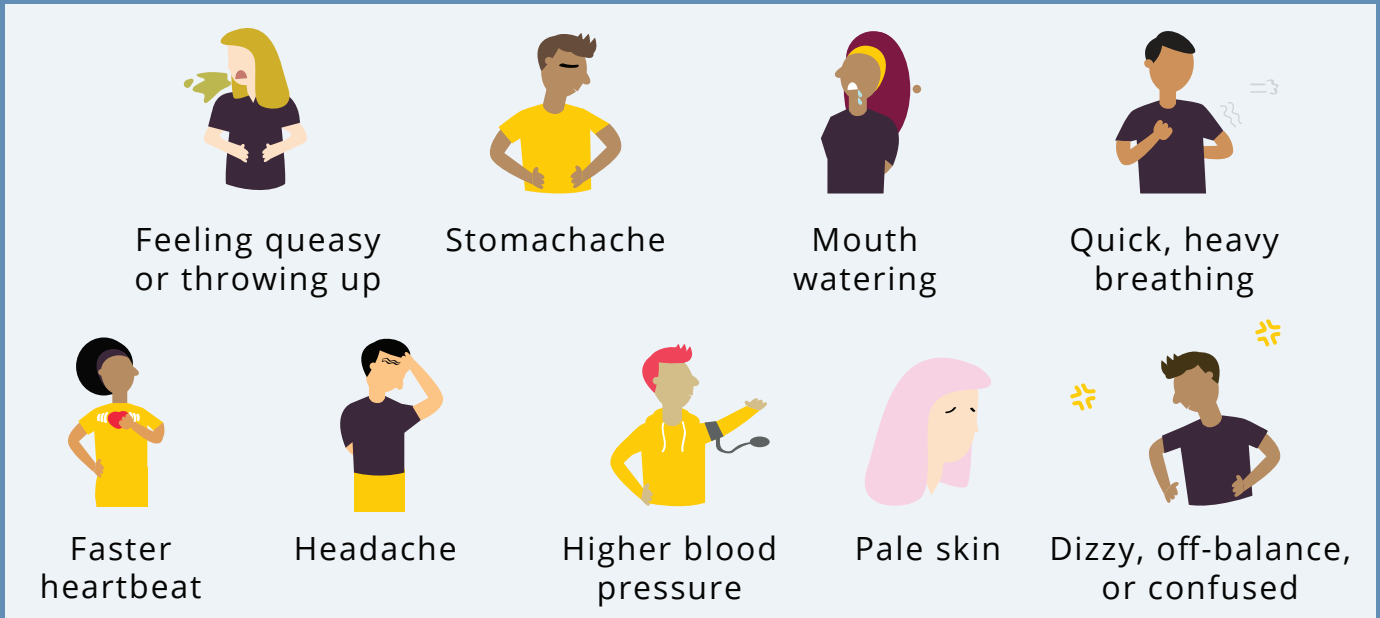


Stages of Nicotine Poisoning

There are two stages of nicotine poisoning. In the **first phase** of overdose, you may experience these symptoms:



In the **second phase**, you may experience these symptoms:



If you or someone you know experiences these symptoms, call the **Poison Center** at **800-222-1222** right away. If the person who is poisoned can't wake up, has a hard time breathing, or has a seizure, call 911.